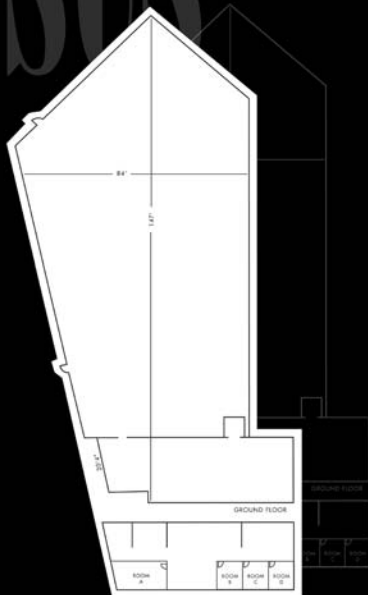


STAGE**9****STAGE 9:****84' x 147' x 24'**

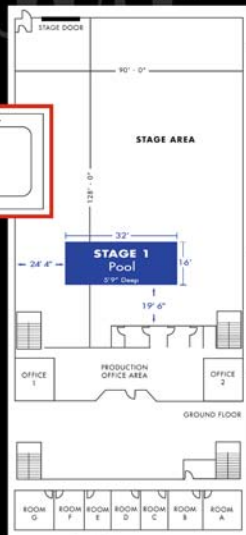
- Door: 14' x 14.6' High
- 1st Floor Office Area: 3700 sq. ft.
- 2nd Floor: 14 Offices / 4600 sq. ft.

**STAGE****1***

- Pool

STAGE 1
Pool**STAGES 1-4:****90' x 128' x 24'**

- Door: 14' x 14.6' High
- 1st Floor Office Area: 1800 sq. ft.
- 2nd Floor: 7 Office/Dressing Rooms
- Star Dressing Rooms A & G with bathrooms and showers
- 3600 AMPS AC Each Stage

**STAGE****3****STAGE****2***

- 2 Wall Cyclorama 80' x 60' x 22'

STAGE**4****STAGES 1-4**

SERVICES:

- Within the 30-Mile Zone
- Deluxe Screening Rooms
- Clear Span Stages
- Lighting Grids
- Lighting and Grip Equipment
- Expendable Supplies
- Exterior Shooting Areas
- Guard Gated Studio
- Acres of Secured Parking
- Air Conditioned Stages
- 2 Large In-Ground Pools/Pits
- Location Production Vehicles
- Full Post Production
- Custom 60' x 80' x 22' Hardwall Cyclorama
- Each Stage with 3600 Amps
- Commissary

SCS
SANTA CLARITA STUDIOS

FULL SERVICE
INDEPENDENT
STUDIO

CREDITS:

FEATURES:

- The Banger Sisters
- True Lies
- Terminal Velocity
- Planet of the Apes
- Adaptation

TELEVISION:

- CSI Crime Scene Investigation (5 seasons)
- Carnivale (2 seasons)
- Deadwood (2 seasons)
- Melrose Place (5 seasons)
- Big Love

COMMERCIALS:

- Reebok
- BMW
- Bud Lite
- McDonalds
- AT&T

MUSIC VIDEOS:

- No Doubt
- Destiny's Child
- System of a Down
- Keith Sweat
- Dave Mathews Band

- 10 stages
- 12,000 to 26,000 sq. ft.
- Lighting/Grip Equipment • Trucks • Generators
- Full Post Production
- Screening Room
- Full Service Production Center
- High Speed Internet/Wireless Campus
- Security
- Ample Parking

25135 Anza Drive, Santa Clarita, CA 91355
tel: 661.294.2000 • fax: 661.294.2020
email: info@SC-Studios.com

661.294.2000
www.SC-Studios.com

STAGE**5***

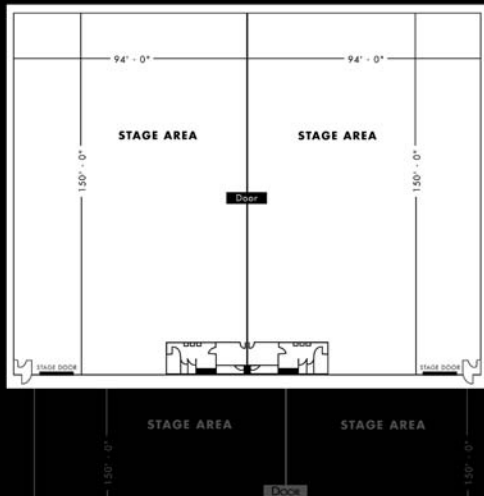
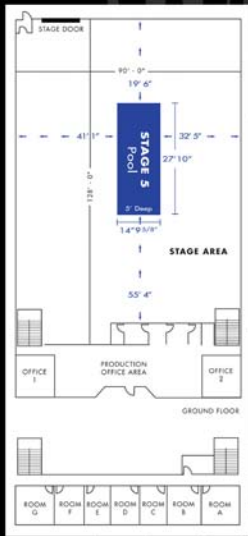
• Pool

**STAGES 5-6:
90' x 128' x 30'**

- Door: 14' x 14.6' High
- 1st Floor Office Area: 1800 sq. ft.
- 2nd Floor: 7 Office/Dressing Rooms
- Star Dressing Rooms A & G with bathrooms and showers
- 3600 AMPS AC Each Stage

STAGE**6****STAGE****7****STAGES 7-8:
94' x 150' x 34'**

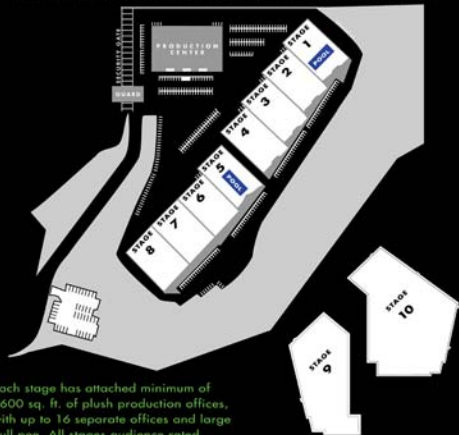
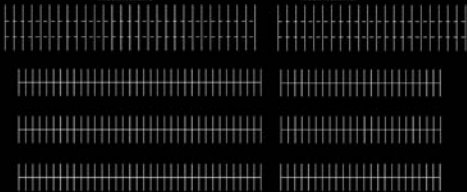
- Door: 14' x 14.6' High
- 1st Floor Office Area: 1800 sq. ft.
- 2nd Floor: 7 Office/Dressing Rooms
- Star Dressing Rooms A & G with bathrooms and showers
- 3600 AMPS AC Each Stage

STAGE**8****STAGE 5
Pool**

STUDIO LAYOUT

TRUCK PARKING

TRUCK PARKING



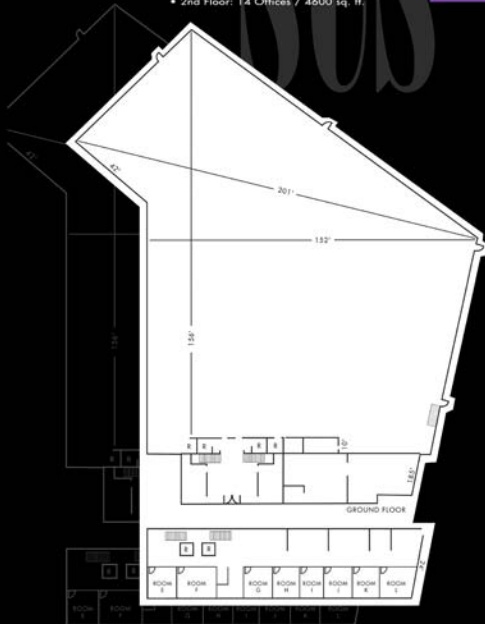
Each stage has attached minimum of 3600 sq. ft. of plush production offices, with up to 16 separate offices and large bull pen. All stages audience rated.

STAGE 10: 156' x 201' x 24'

- Door: 14' x 14.6' High
- 1st Floor Office Area: 3700 sq. ft.
- 2nd Floor: 14 Offices / 4600 sq. ft.

STAGE

10



STAGES 9 & 10